

# Smart City - Street Lights

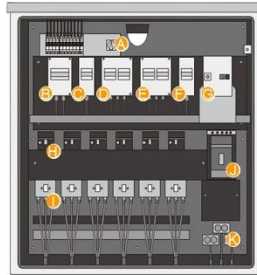
## Street Lights Intelligence

### Intelligence at lamp level

- Power line communication and seamless data transmission
- Individual luminaire on/off and dimming
- Automatic fault detection for each luminaire
- Energy consumption per luminaire
- Bulb status and burn hours detection
- Lamp antitheft

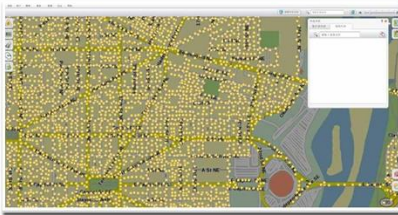
### Intelligence at cabinet level

- Wireless communication and intelligent streetlight network
- Cabinet-level metering and control
- Astronomical clock and ambient light detection
- Power quality monitoring and fault detection
- Cabinet and cable antitheft



- A. Manual switch
- B. Concentrator
- C. I/O Module
- D. Switch
- E. Current
- F. Backup Battery
- G. Power meter
- H. Circuit contactor
- I. Circuit breaker
- J. Main breaker
- K. Incoming power

### Patent lighting scene management technology



### Precise energy consumption measurement and analysis



**VaOpto**  
LED Manufacturer

## Smart Lighting Solutions



## Product Guide

VaOpto  
www.vaopto.com

5178 W. Patrick Lane  
Las Vegas, NV 89118, U.S.A

Phone: [702] 517-5789  
Email: info@vaopto.com



Wireless smart lights, dim/color temperature/color control.

Sensors, including brightness, temperature, humidity, motion, image etc. Provides control & env data

Gateway: bridge device network to cloud, as well as A/C control & building management system

Cloud service collect & analyze data from building to give insights and to optimize control



Gateway



Remote Controller



Sensor



Fire Alarm



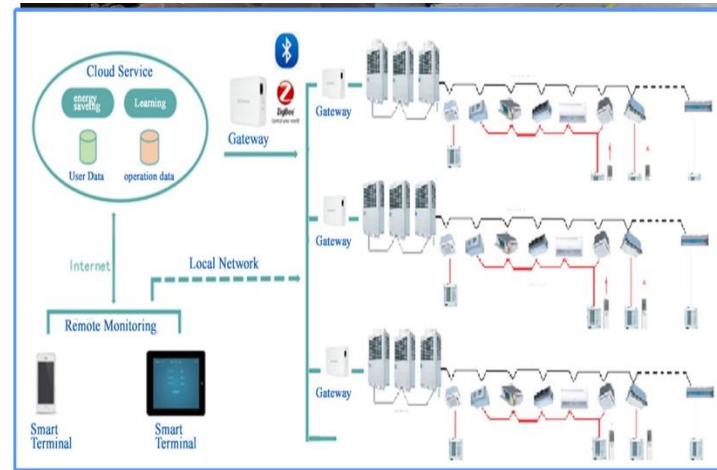
Sensor



Smart Plug



LED Lights



### Smart Home Floor Plans (Lighting and Security)

