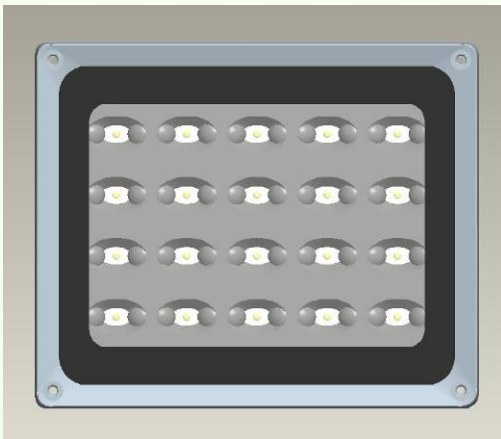




July 27, 2009

LED Flood Light

SPECIFICATION



RoHS Compliant  

World-class optoelectronic device manufacturing facility since 1969
25 million products manufactured daily
ISO14001 / ISO9001 / TS16949 Certified
White Licensed



Contents

Introduction 4
VO-FD-20CW1-60A-120N Series 5
General Precautions 8
Warranty and Liability Information 8
Contact Us 8

Introduction

VaOpto's Light Emitting Diode (LED) Flood Light Series saves energy and lasts a long life.

Environmentally Conscious

Energy efficient, lead free, and long life means fewer lamp replacements vs. standard halogen flood light and incandescent light sources.

Outstanding Energy Efficiency

Compare to standard Incandescent light sources, VaOpto's LED Flood Light Series are reducing energy consumption by 70%-80%. The lamps' optics concentrates light on the target, diminishing wasted extraneous light and increases the CBCP.

Long Life = Labor Savings

Delivers at least 70% of initial light output after at last 50,000 hours.

Various Colors

Cool White (5000-10000K)
Neutral White (3700-5000K)
Warm White (2600-3700K)

Excellent Color Rendering

Cool White: CRI > 70
Neutral White: CRI > 75
Warm White: CRI > 80

Various Viewing Angles

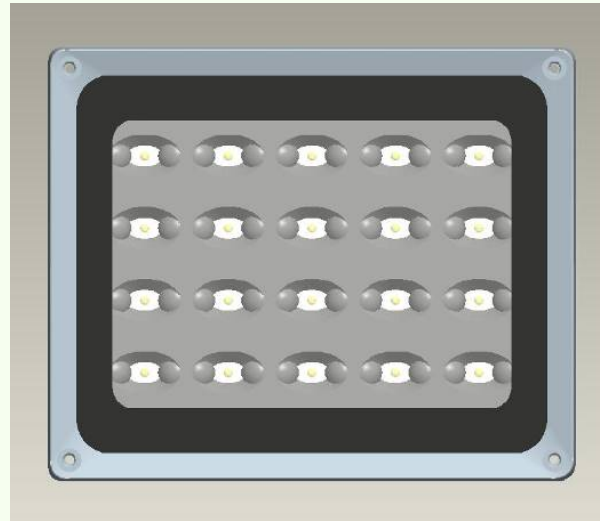
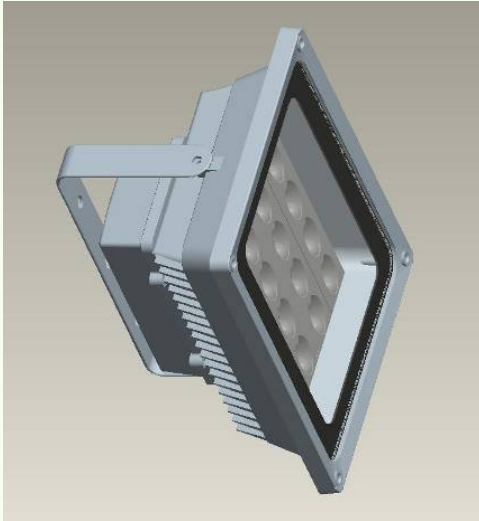
60 degrees

Product feature

100-240V AC Input

VO-FD-20X1-60A-120N Series where X may be CW, NW, or WW

Product Appearance

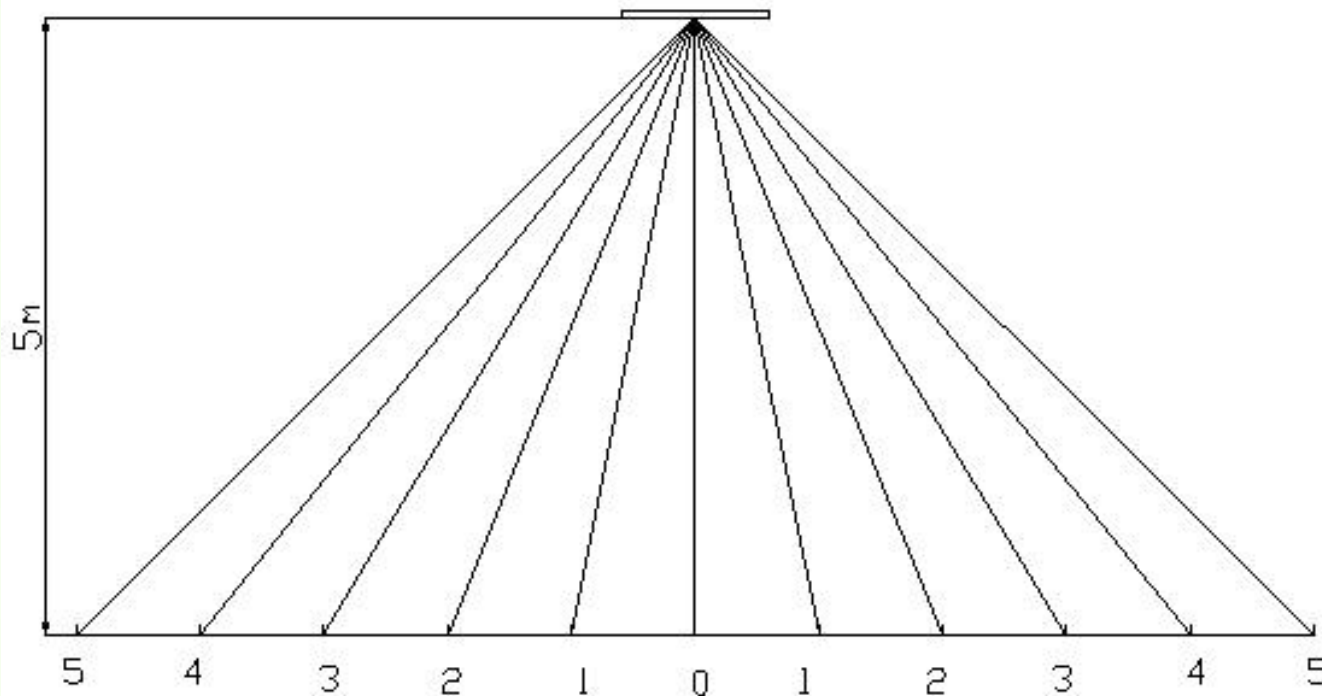


Electrical-Optical Characters

Item	Parameter
CONSTRUCTION	Aluminum-alloy shell, Antioxidation, Antisepsis
Voltage(V)	AC 50/60Hz 120V
Illumination efficient	> 80lm/W
Power efficient	>90%
LED Output power	24W
System Output power	30W
Light distribution curve	Near rectangle facular
Light source	High Power LED
Life-span	30,000H
Luminous Flux Φ_V	1800 Lm
CCT	3000k-7000K
Central Illumination (E)	≥ 60 lux (Height=5M)
	≥ 45 lux (Height=6M)
Available Illumination Range	Height=5M: L10×W10
	Height=6M: L12×W12
Degree of Illumination uniformity	> 0.4
Dimension	390*340*75mm
Weight	4kg

Optical Characters

Floodlight



Horizontal distance (meter)	0	1	2	3	4	5
Illumination (lux)	65	60	55	30	30	18

Part number	Color	Size (mm)	LED no.	Power (w)	Lumens (lm)	Viewing Angle	Input Voltage (VAC)
VO-FD-20CW1-60A-120N	Cool White	320*280*270	20	24	1800	60	100-240
VO-FD-20NW1-60A-120N	Neutral White	320*280*270	20	24	1700	60	100-240
VO-FD-20WW1-60A-120N	Warm White	320*280*270	20	24	1500	60	100-240

Precautions

- LEDs are static sensitive devices. Precautions should be taken to ensure that LEDs are well protected from ESD during handling.
- ESD protection for GaP and AlGaAS based chips is still necessary even though the chips are safe in low static-electric discharge events
- AllInGap, GaN and/or InGaN based chips are STATIC SENSITIVE devices and ESD protection must be taken into consideration in the initial design stages.
- Do not operate LEDs in reverse bias.

Warranty and Liability Information

- Two years limited warranty.
- The information contained herein is presented only as a guide for the applications of our products.
- No responsibility is assumed by VAOPTO for any infringements of intellectual property or other infringements of the rights of third parties that may result from its use.
- VAOPTO is committed to a process of continuous improvements of the quality and the features of its products and reserves the right to make changes that result in such improvements.
- VAOPTO products are not intended for use in applications where extraordinarily high reliability is required to prevent the loss of human life or where failure could result in bodily injury.
- VAOPTO limits the extent of our liability to the initial component cost and will, in the event of a failure, replace a failed component or refund the purchase price at VAOPTO option.

For customer service and technical support, please contact:

Headquarter:

Virginia Optoelectronics, Inc.
1405 Ashford Court
Blacksburg, VA 24060, U.S.A.
Phone: (540) 449 9658
Fax: (540) 552 6999
Email: info@vaopto.com
www.vaopto.com

Distributors:

www.e-sonic.com
www.wescodist.com
www.wpgamericas.com
www.nacsemi.com